



LUNA ROAD™
LIGHTING THE WAY
OPTIMUS

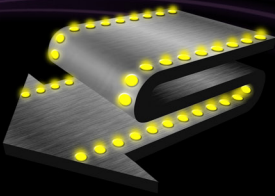
About Optimus

The future of Solar Powered, Eco-Friendly, Night Time Directional Illumination is here! The Luna Road Team is proud to unveil the new and improved LR-40 : OPTIMUS Series.

With its modern, futuristic and rugged design, in addition to its top-class and efficient performance; the LR-40 : OPTIMUS Series is in a class of its own. The first version of the LR-40 : OPTIMUS Series; this new Luna Road Light will illuminate roadways and pathways around the globe!

Technical Specs

Dimensions	Size (mm)	132*122*20 (mm)
Weight	Net Weight	520 (gm) / 520 (gm)
Solar-Cell	Max. Output	0.35 W
	Charge Ability	118mA/Hour
Storage Device	Type	1600mAh NI-MH Battery
LED	Type	8mm (high intensity emitting diode)
	Emission Color	Red, Green, Blue, White & Yellow
	Quantity	2 pcs per side (available in single or double sided)
	Output per LED	11000 MCD
	Power Current	14mA/Hour
Lighting Modes	Steady and (or) Flashing LEDs available	
Loading Capacity	Around 20 tons per tire	
Operating Temperature	-25 to +75 degree C	
Shell Material	Solar Panel & Front Covers	Transparent Polycarbonate
	Main body	Die-cast aluminum alloy



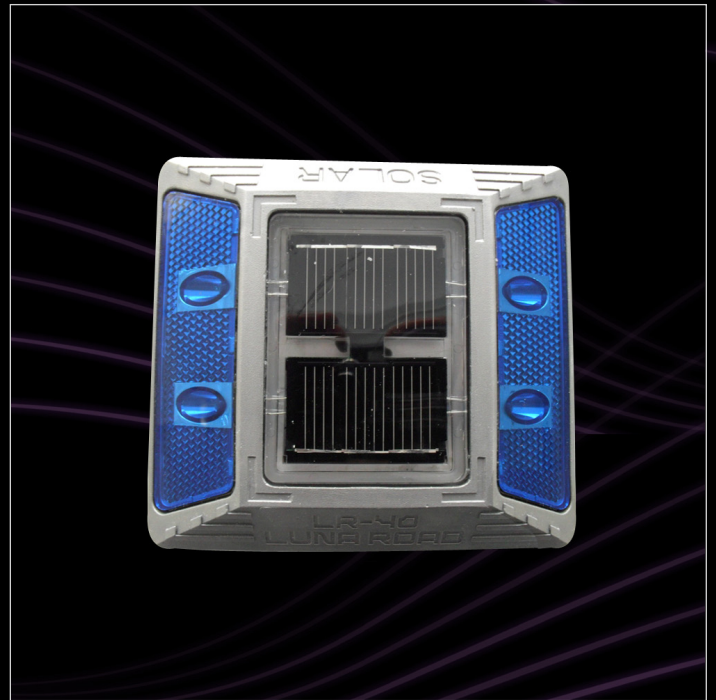
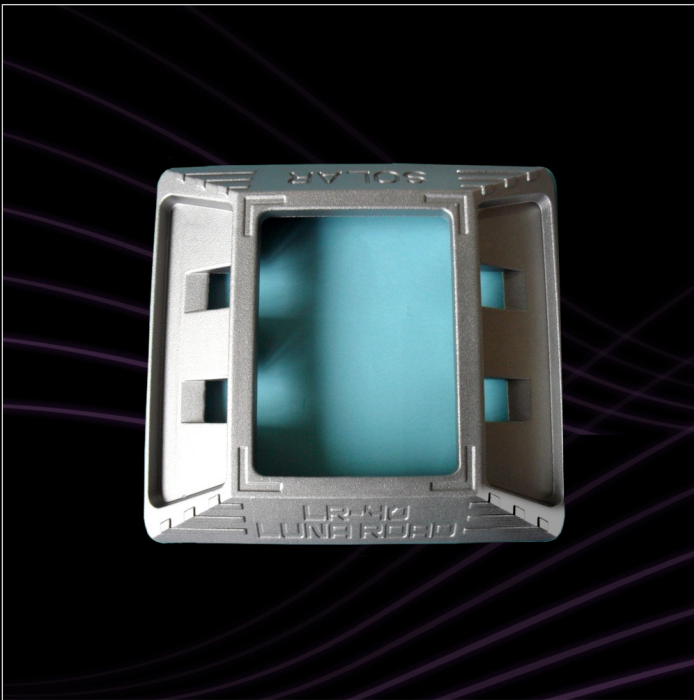
LUNA ROAD™

LIGHTING THE WAY

OPTIMUS

Applications

Center lines of highway, Side lines of highway, road sides, partition areas, bridge roads, road curves, T-Intersections, Highway Exits and many more applications.



For further technical and pricing information, please contact The Luna Road Team.

info@lunaroad.com

www.lunaroad.com

1 800 257 0314